

*Department of Medicine  
Lewis Katz School of Medicine at Temple University*



*2019 Annual Fellows, Residents and Medical Students  
Research Symposium*

*Sol Sherry Awards for  
Excellence in Research*

*Wednesday, June 5, 2019*

*Medical Education and Research Building  
Luo Commons*

---

---

The Fellows and Residents Research Forum was initiated over 35 years ago to provide the Fellows and the Residents in the Department of Medicine with an opportunity to present their research effort. The Forum is a reflection of the ongoing research activities in the Department, and a year-end summation of the projects carried out by the Fellows and Residents.

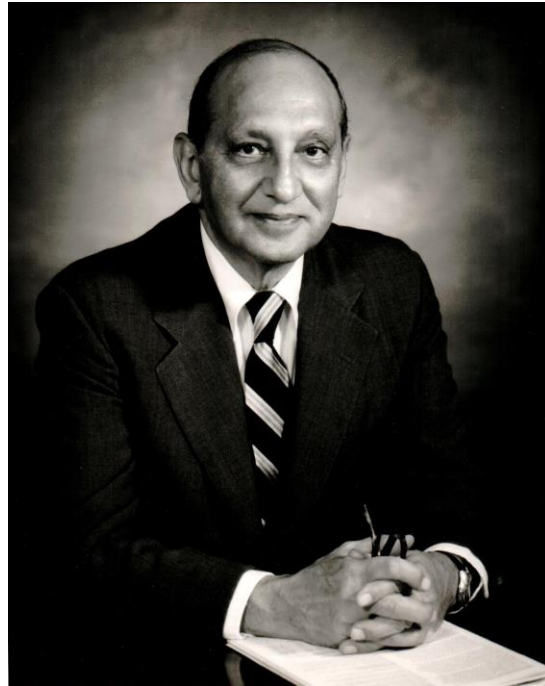
---

---

## Dedication

---

### Dr. Sol Sherry 1916-1993



*Sol Sherry, M.D., joined Temple University School of Medicine as professor and chairman of the Department of Medicine in 1968. In 1970, Dr. Sherry founded and served as director of the University's Specialized Center for Thrombosis Research, the largest of its kind in the United States, which was later named in his honor. He served as dean of the School of Medicine from 1984-86. He was a recipient of an honorary doctor of science degree, the University's first Distinguished Professor and was honored with the establishment of the Sol Sherry Chair in Medicine.*

*For his contributions to medical research, teaching and patient care, Dr. Sherry was the recipient of other numerous awards and honors. He was Master of the American College of Physicians and The John Phillips Memorial Medalist of the American College of Physicians; a Fellow of the Royal College of Physicians (London), and recipient of the Robert P. Grant Medal of the International Society on Thrombosis and Hemostasis--a society which he founded in 1977. Dr. Sherry also received awards from the American Heart Association, the Philadelphia County Medical Society, the Texas Heart Institute and the Swedish Society of Cardiology.*

**Fellows, Residents and Medical Students Research Symposium**  
**Wednesday, June 5, 2019**  
**Medical Education and Research Building**

---

- 8:00 – 11:00 AM**      **Oral Presentations**  
                                 **Fellows – Room 217**  
                                 **Residents – Room 219**
- 11:00 – 12:45**      **Luncheon, Poster Viewing and Poster Discussions (Luo Commons)**
- 12:45 PM**            **Presentation of Awards to Fellows and Residents (Luo Commons)**
-

## **Oral Presentations – Fellows**

***Chair: A. Koneti Rao, MD***

***Judges: Drs. Peter Axelrod, Daniel Edmundowicz,  
Frank Friedenber, Jamie Garfield, Kevin Williams***

<b>8:00 AM</b>	<b>Sara Ocheltree, MD (Thoracic Medicine)</b> <i>Incidence and Outcome of Airway Disease Post Lung Transplants: A Single Center Study</i>	<b>Abstract #42</b>
<b>8:15 AM</b>	<b>Joseph DeRose, DO (Infectious Disease)</b> <i>Risk Factors for Clostridium difficile Infection in Lung Transplant Patients</i>	<b>Abstract #15</b>
<b>8:30 AM</b>	<b>Hammad Liaquat, MD (Gastroenterology/Hepatology)</b> <i>Accuracy And Validity Of Non-invasive Liver Fibrosis Scoring System In Patients With Biopsy Proven Non-alcoholic Fatty Liver Disease (NAFLD)</i>	<b>Abstract #31</b>
<b>8:45 AM</b>	<b>Andrew J. Gangemi, MD (Thoracic Medicine)</b> <i>Does Poor Sleep Health Exacerbate the Negative Effects of Smoking on Cardio-Pulmonary Health in African American Smokers?</i>	<b>Abstract #24</b>
<b>9:00 AM</b>	<b>Christine Mathai, MD (Endocrinology)</b> <i>Hypoglycemia in End-Stage Renal Disease – Clinical Considerations</i>	<b>Abstract #33</b>
<b>9:15 AM</b>	<b>Rebecca Fallis, MD (Infectious Disease)</b> <i>Risk Factors Associated with Extended Spectrum Beta-Lactamase (ESBL) Bacteremia</i>	<b>Abstract #21</b>
<b>9:30 AM</b>	<b>Break</b>	
<b>9:45 AM</b>	<b>Massa Zantah, MD (Thoracic Medicine)</b> <i>Acute exacerbations of COPD versus IPF in Patients with Combined Pulmonary Fibrosis and Emphysema</i>	<b>Abstract #65</b>
<b>10:00 AM</b>	<b>Herit Vachhani, MD (Gastroenterology)</b> <i>Vascular Pressure Bands on High Resolution Esophageal Manometry with Impedance (HREMI) Studies: Description, Prevalence and Clinical Significance</i>	<b>Abstract #59</b>
<b>10:15 AM</b>	<b>Eli Miller, MD (Endocrinology)</b> <i>Hospital readmission risk and risk factors of discharges with a primary diagnosis of diabetes differ from discharges with a secondary diagnosis of diabetes</i>	<b>Abstract #35</b>

**10:30 AM**

**Joseph A. Ramzy, MD (Thoracic Medicine/Rheumatology) Abstract #47**

*Autoimmune Serologies Predict Response to Treatment in Patients with Connective Tissue Related Interstitial Lung Disease (CTD-ILD)*

## Oral Presentations – Residents

*Chair: Henry Parkman, MD*

*Judges: Drs. Jonathan Anolik, Roberto Caricchio,  
David Essex, Henry Parkman, Rafik Samuel*

<b>8:00 AM</b>	<b>Benjamin Miron, MD (Hematology/Oncology)</b> <i>Defects in DNA repair and survival in cisplatin based neoadjuvant chemotherapy for muscle invasive bladder cancer</i>	<b>Abstract #36</b>
<b>8:15 AM</b>	<b>Torey Roesch, MD (Infectious Diseases)</b> <i>MRSA Nares Screening as a Tool for Antibiotic Guidance in Critically Ill Lung Transplant Patients</i>	<b>Abstract #49</b>
<b>8:30 AM</b>	<b>Deval Desai, MD &amp; Tal Zivan, MD (Cardiology)</b> <i>Lack of utility of inhaled nitric oxide after cardiac transplantation</i>	<b>Abstract #16</b>
<b>8:45 AM</b>	<b>Matthew S. Delfiner, DO (Thoracic Medicine/Cardiology)</b> <i>Hemoglobin and Platelet Count Predict Mortality in VA-ECMO</i>	<b>Abstract #13</b>
<b>9:00 AM</b>	<b>Mohammad Faizan Zahid, MD (Hematology/Oncology)</b> <i>Checkpoint inhibitor therapy with and without radiation in diffuse large B-cell lymphoma: a single center analysis</i>	<b>Abstract #64</b>
<b>9:15 AM</b>	<b>Anthony LaCava, MD (Internal Medicine)</b> <i>Home Visits: An Overlooked Yet Acceptable Intervention for Asthma Management in Low Income and Minority Adults</i>	<b>Abstract #27</b>
<b>9:30 AM</b>	<b>Break</b>	
<b>9:45 AM</b>	<b>Eno-Obong Essien, MD (Thoracic Medicine)</b> <i>Call for attention: Hypoxia from acute Pulmonary Embolism</i>	<b>Abstract #19</b>
<b>10:00 AM</b>	<b>Stephanie Spivack, MD (Infectious Diseases)</b> <i>The Impact of Addiction Medicine Consultation on Rates of Discharge Against Medical Advice in Patients with Opiate Dependence and Staph Aureus Bacteremia</i>	<b>Abstract #53</b>
<b>10:15 AM</b>	<b>Evan Carabelli, MD (Cardiology)</b> <i>Progression of Coronary Artery Calcification: Observations From An Employer Health Sponsored Screening Program</i>	<b>Abstract #5</b>
<b>10:30 AM</b>	<b>Zachary Daitch, MD (Gastroenterology)</b> <i>Audit of barriers to treatment in previously evaluated hepatitis C virus patients: a basis for future outreach campaign</i>	<b>Abstract #9</b>
<b>10:45 AM</b>	<b>Marina Baskharoun, MD &amp; Ryan Ber, MD (Hospital Medicine)</b> <i>Think Before You Order: Reducing Inpatient Lab Testing</i>	<b>Abstract #2</b>

**11:00 AM**

**Anil Rengan, MD (Hematology/Oncology)**

**Abstract #48**

*Platelet Trends are Not Predictive of Heparin-Induced  
Thrombocytopenia in Patients on Extracorporeal  
Membrane Oxygenation*

## Poster Presentations – Fellows

*Chair: Iris Lee, MD*

*Judges: Drs. Sharon Herring, Iris Lee, Dan Rubin*

- |   |   |
|---|---|
| <b>David Baumgarten, MD (Thoracic Medicine)</b><br><i>Effect of Graft Side Perfusion Mismatch on Outcomes in Single Lung Transplant</i>   | <b>Poster Board #1</b><br><b>Abstract #4</b>  |
| <b>Rebecca Fallis, MD (Infectious Diseases)</b><br><i>Screening for Extragenital Gonorrhea and Chlamydia in Men who have Sex with Men (MSM) at an Urban HIV Clinic</i>  | <b>Poster Board #2</b><br><b>Abstract #22</b> |
| <b>Asana Anderson, MD (Rheumatology)</b><br><i>Outcomes of Low Dose Intravenous Cyclophosphamide for Lupus Nephritis at Temple Rheumatology Clinic</i>  | <b>Poster Board #3</b><br><b>Abstract #66</b> |
| <b>Eli Miller, MD (Endocrinology)</b><br><i>Autoimmune diabetes presenting as repeat episode of triglyceride induced pancreatitis</i>   | <b>Poster Board #4</b><br><b>Abstract #34</b> |
| <b>Sara Ocheltree, MD (Thoracic Medicine)</b><br><i>Semi-prone EBUS for the Diagnosis of a Challenging Right Lower Lobe Nodule</i>  | <b>Poster Board #5</b><br><b>Abstract #41</b> |
| <b>Sara Ocheltree, MD (Thoracic Medicine)</b><br><i>Differences in GOLD 2017 Treatment Group Assignments between the COPD Assessment Test and Modified Medical Research Council Dyspnea Scale and Their Association with Exacerbations: an analysis of the SPIROMICS cohort Fellowships</i> | <b>Poster Board #6</b><br><b>Abstract #40</b> |
| <b>Justin Levinson, MD, MBA (Geriatrics)</b><br><i>Patient Barriers to Bisphosphonate Treatment</i>   | <b>Poster Board #7</b><br><b>Abstract #29</b> |
| <b>Hammad Liaquat, MD (Gastroenterology/Hepatology)</b><br><i>The role of heterozygous alpha-1-antitrypsin piz phenotype and methotrexate therapy in development of cirrhosis: a case report</i>  | <b>Poster Board #8</b><br><b>Abstract #46</b> |
| <b>Arthur Lau, MD (Rheumatology)</b><br><i>Effect of initiating urate lowering therapy during acute gout flares on the length of stay in hospitalized patients</i>  | <b>Poster Board #9</b><br><b>Abstract #28</b> |



## **Poster Presentations – Residents**

***Chair: Anuradha Paranjape, MD***

***Judges: Drs. Wissam Chatila, Jocelyn Edathil, Avrum Gillespie,  
Sabrina Islam, Larry Kaplan, Rakesh Malhotra, A. James Mamary,  
Catherine Najem, Anuradha Paranjape***

- |   |  |
|---|--|
| <b>Matthew S. Delfiner, DO (Cardiology)</b><br><i>Recent Diagnosis and Undefined Etiology Delay Initiation of Mineralocorticoid Receptor Antagonism in Heart Failure</i>        | <b>Poster Board #10<br/>Abstract #14</b> |
| <b>Matthew S. Delfiner, DO (Cardiology)</b><br><i>Echocardiographic Changes with Mineralocorticoid Antagonists in Heart Failure</i>   | <b>Poster Board #11<br/>Abstract #12</b> |
| <b>Matthew S. Delfiner, DO (Thoracic Medicine/Cardiology)</b><br><i>Baseline Renal and Hepatic Function Predict Mortality in VA-ECMO</i>  | <b>Poster Board #12<br/>Abstract #11</b> |
| <b>Linda P. Vien, MD (Internal Medicine)</b><br><i>Primary Extranodal Jejunal Diffuse Large B cell Lymphoma as a Diagnostic Challenge for Intractable Emesis</i>                | <b>Poster Board #13<br/>Abstract #61</b> |
| <b>Oisin A. O'Corragain, MD (Thoracic Medicine)</b><br><i>Postcoital Hemoptysis: A Case report and discussion</i>   | <b>Poster Board #14<br/>Abstract #43</b> |
| <b>Crystal Chen, MD (Cardiology)</b><br><i>Increase in end systolic dimension may be an early predictor of myocardial damage in patients receiving cardiotoxic chemotherapy</i> | <b>Poster Board #15<br/>Abstract #46</b> |
| <b>Aruj Choudhry, MD (Gastroenterology)</b><br><i>Nasogastric Tube Suction Impairs Apposition of Full Covered Esophageal Metal Stent</i>  | <b>Poster Board #16<br/>Abstract #7</b>  |
| <b>Ho-Man Yeung, MD (Internal Medicine)</b><br><i>A case of MRSA infection after MSSA bacteremia: new resistance, new infection or co-infection?</i>                            | <b>Poster Board #17<br/>Abstract #63</b> |
| <b>A. Hussain Azizi, MD (General Internal Medicine)</b><br><i>Complicated Lupus Flare in Newly Diagnosed SLE Patient with Recent EBV Infection</i>                              | <b>Poster Board #18<br/>Abstract #1</b>  |
| <b>Lauren Monaco, MD (Cardiology)</b><br><i>Complete Heart Block and Syncope: A Rare Presentation of Mixed Lymphocytic and Giant Cell Myocarditis</i>                           | <b>Poster Board #19<br/>Abstract #37</b> |
| <b>Lauren Monaco, MD (Internal Medicine)</b><br><i>Rash in systemic lupus erythematosus: A diagnostic challenge</i>   | <b>Poster Board #20<br/>Abstract #38</b> |

<p><b>Christina Martin, MD (Internal Medicine)</b>  <i>A Rare Case of Diffuse Alveolar Hemorrhage Caused by an Acute Mycoplasma pneumoniae Infection</i></p>	<p><b>Poster Board #21 Abstract #32</b></p>
<p><b>Marina Baskharoun, MD &amp; Sara Goff, MD (Gastroenterology)</b>  <i>Iron Deficiency in Gastrointestinal Bleeding</i></p>	<p><b>Poster Board #22 Abstract #3</b></p>
<p><b>Dianna Gaballa, MD (Cardiology)</b>  <i>Prospective Investigation of Tricuspid Valve Regurgitation Before and After Implantable Cardioverter Defibrillator or Permanent Pacemaker Placement Using 2-D Transthoracic Echocardiogram Imaging</i></p>	<p><b>Poster Board #23 Abstract #23</b></p>
<p><b>Nino Kvantaliani, MD (Internal Medicine)</b>  <i>Increased susceptibility of Neuroleptic Malignant Syndrome in patient with Lewy Body Dementia after administration of Paliperidone</i></p>	<p><b>Poster Board #24 Abstract #26</b></p>
<p><b>Michael S. Tzeng, MD (Cardiology)</b>  <i>Cardiac Compression and Hemodynamic Collapse Caused by High-Grade Diffuse Large B-Cell Lymphoma Requiring Hemodynamic Support with Venoaerterial Extracorporeal Membrane Oxygenation</i></p>	<p><b>Poster Board #25 Abstract #57</b></p>
<p><b>Michael S. Tzeng, MD (Hospital Medicine)</b>  <i>Yes, Your Order Can Be Added On! A Quality Improvement Project to Improve the Yield of Lab Add-On Orders in the Inpatient Hospital Setting</i></p>	<p><b>Poster Board #26 Abstract #56</b></p>
<p><b>Michael S. Tzeng, MD (Hospital Medicine)</b>  <i>Let's Fix Telemetry! A Quality Improvement Initiative to Decrease Inappropriate Telemetry Use</i></p>	<p><b>Poster Board #27 Abstract #58</b></p>
<p><b>Anika Vaidy, MD (Cardiology)</b>  <i>A Significant Portion of Patients with Chronic Thromboembolic Pulmonary Hypertension Were Diagnosed with May-Thurner Syndrome Using Screening Venography</i></p>	<p><b>Poster Board #28 Abstract #60</b></p>
<p><b>Jordan Senchak, MD (Hematology/Oncology)</b>  <i>A rare case of primary cutaneous CD8+ aggressive epidermotropic cytotoxic T-cell lymphoma (PCAETL)</i></p>	<p><b>Poster Board #29 Abstract #52</b></p>
<p><b>Zachary Daitch, MD (General Internal Medicine/Hospital Medicine)</b>  <i>Improving Resident Understanding and Attending Utilization of Primary Medical Literature in Practice: A Needs Assessment and Model for Improvement</i></p>	<p><b>Poster Board #30 Abstract #8</b></p>
<p><b>Heather Fahey, MD (Cardiology)</b>  <i>Gender Differences in Coronary Artery Calcifications: Observations from an Employer Health Benefits Screening Program</i></p>	<p><b>Poster Board #31 Abstract #20</b></p>
<p><b>Lauren Ng, MD (Nephrology)</b>  <i>A Case of Tamponade caused by Supratherapeutic Tacrolimus</i></p>	<p><b>Poster Board #32 Abstract #39</b></p>

**Benjamin Rosenfeld, MD (Cardiology)**

*Leiomyosarcoma Tumor Embolism Masquerading as Thrombus in Transit*

**Poster Board #33**

**Abstract #50**

**Emily Walzer, MD (Hospital Medicine)**

*Improving documentation and Temple University Hospital*

**Poster Board #34**

**Abstract #62**

**Evan Carabelli, MD (Cardiology)**

*Coronary Artery Calcifications Under the Age of Forty-Five:*

*Observations from an Employer Health Benefits Screening Program*

**Poster Board #35**

**Abstract #6**

**Samantha Pettigrew, MD (Thoracic Medicine)**

*Veno-Arterial Extracorporeal Membrane Oxygenation for Cardiac arrest*

*related to massive Pulmonary Embolism; a systemic review*

**Poster Board #36**

**Abstract #45**

## **Poster Presentations – Medical Students**

***Chair: Marissa Blum, MD***

***Judges: Drs. Parag Desai, Ajay Rao, Bizath Taqui***

**Samuel Tanner, BA (Gastroenterology)**

*Impact of Patient Position on Esophageal Motility Disorders using High Resolution Esophageal Manometry with Impedance (HREMI): Supine versus Upright Swallows*

**Poster Board #37**

**Abstract #55**

**Samuel Tanner, BA (Endocrinology)**

*A Pilot Randomized Control Trial to Reduce Hospital Readmission Risk of Patients with Diabetes*

**Poster Board #38**

**Abstract #54**

**Julia A. Rosner (Infectious Diseases/Hospital Medicine)**

*The 1% (of Helminths): Recurrent Spinal Neurocysticercosis*

**Poster Board #39**

**Abstract #51**

**Jeremy Klein, BA (Hematology/Oncology)**

*Polycythemia Vera Masked by Pernicious Anemia*

**Poster Board #40**

**Abstract #25**

**Sawan Dutta (Thoracic Medicine/Cardiology)**

*Inconsistent Harmonic Peaks in Patients with Continuous Left Ventricular Assist Devices at Baseline*

**Poster Board #41**

**Abstract #17**

**Sawan Dutta (Thoracic Medicine/Cardiology)**

*Single Center Experience with Safety of Long-Term Discontinuation of Anticoagulation Post Hemorrhagic Complications in Patients with Ventricular Assist Devices*

**Poster Board #42**

**Abstract #18**

**Avani Dalal, BS (Hospital Medicine)**

*Investigating Foreign Language Services at Temple University Hospital*

**Poster Board #43**

**Abstract #10**